

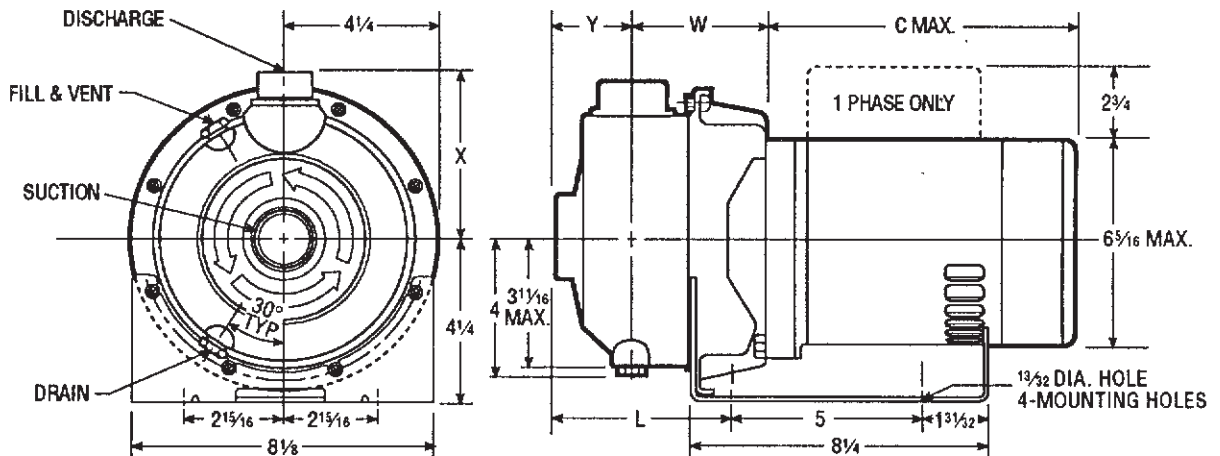
**Stainless Steel  
Close-Coupled Centrifugal Pumps**

Effective February, 1994

**ENGINEERING DATA**

Clockwise Rotation Viewed from Drive End	Installation Drawing No. 276-81	Certified for construction purposes <input type="checkbox"/> For Approval <input type="checkbox"/> For Record
	By _____	

Signature \_\_\_\_\_ Date \_\_\_\_\_



**DIMENSIONS - DETERMINED BY PUMP**

Pump	Suction	Discharge	HP	W	X	Y	L
1ST	1 1/4	1	1/2 - 2	3 5/16	4 5/8	2	4 5/16
2ST	1 1/2	1 1/4	3/4 - 3	3 3/4	4 1/2	2 1/2	5 1/8
3ST	2	1 1/2	1 - 3	3 3/4	4 5/8	2 1/2	5 1/8

**Notes:**

- Pumps will be shipped with top vertical discharge as standard, for other orientations, remove casing bolts, rotate to desired position, and tighten 3/8" bolts to 24 lbs.-ft.
- Dimensions in inches, weight in pounds.
- Not to be used for construction purposes unless certified.
- Motor dimensions may vary with motor manufacturers.

**AVAILABLE MOTOR WEIGHTS & DIMENSIONS**

HP	Motor Weights				C Max. Length
	1 Phase		3 Phase		
	ODP	TEFC	ODP	TEFC	
1/2	16	21	19	18	9 5/16
3/4	19	24	21	21	10 1/4
1	22	26	23	21	11
1 1/2	28	35	27	27	11 5/16
2	33	39	32	33	12 1/16
3	40	43	41	37	12 7/16

Note: Dimensions in inches, weight in pounds.